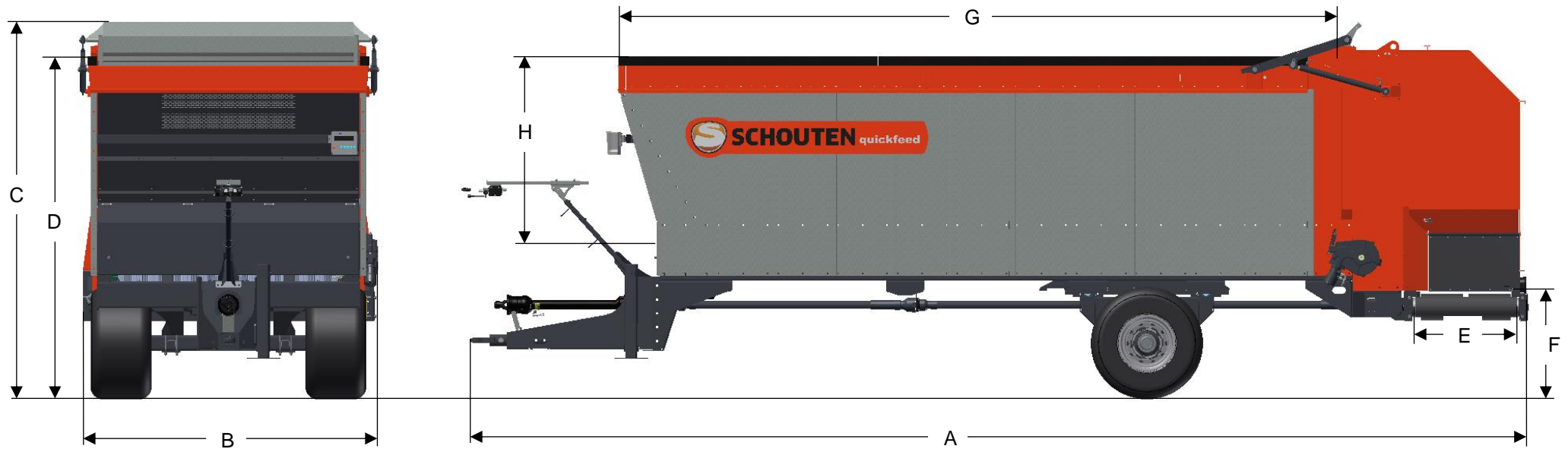


QUICKFEED MDW220



DIMENSIONS

A	LENGTH	8860 MM	E	WIDTH CONVEYOR BELT	850 MM
B	WIDTH	2472 MM	F	HEIGHT CONVEYOR BELT	854 MM
C	HEIGHT	3155 MM	G	BIN LENGTH	6085 MM
D	LOADING HEIGHT	2870 MM	H	BIN HEIGHT	1615 MM

QUICKFEED MDW220

MACHINE INFORMATION

TYPE	MDW220
WEIGHT	4950 KG
BIN CAPACITY	22 M ³
LOAD CAPACITY SINGLE AXLE	14.000 KG
TRACKSIZE AXLE	1800 MM
STANDARD TIRES	500/50-17
SUPPORT LEG	HYDR. DA
PLASTIC PROTECTION BEAM	80X80 MM
HYDR. POWER REQUIREMENT	40LTR/160BAR

NUMBER OF AUGERS	4X VERTICAL
AUGERS DRIVE	PTO/GEARBOX
PTO SPEED	540 RPM
PTO CAMSHAFT SECURITY	2920 NM
NUMBER OF FLOORCHAINS	1X 30 TONS
FLOORCHAIN DRIVE	HYDR
FLOORCHAIN SPEED	0-6 M/MIN
DRIVE CONVEYOR BELT	HYDR
CONVEYOR BELT SPEED	0-6.25 M/SEC

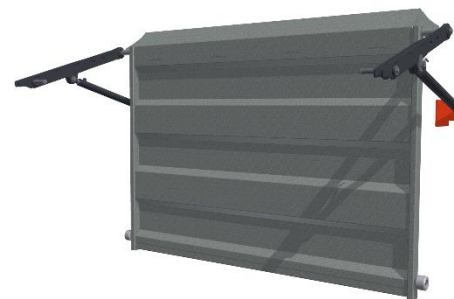
OPTIONS



WEIGHTSYSTEM



24 TONS PARABOLIC SPRING SUSPENSION



HYDR. PROTECTION DOOR



LIGHTNING